

AGLAE 2024

PROFICIENCY TESTING SCHEME CATALOGUE

Metals in waters



AGLAE Association

Parc des Pyramides
427 rue des Bourreliers
59320 Hallennes lez Haubourdin
France

☎ +33 (0)3 20 16 91 40

www.association-aglae.fr

contact@association-aglae.fr

Metals in waters: list of PTS

Fresh waters
3A Metals in fresh waters
3G Additional metals in fresh waters
3D Cr ⁶⁺ in waters
Waste waters
3B Metals in waste waters
3D Cr ⁶⁺ in waters
Saline waters
7 Metals in saline waters
Atypical and non-atypical mineral waters
3C Metals in non-atypical natural mineral waters
3E Metals in sparkling waters
3F Metals in highly mineralised mineral waters

Glossary of the matrices used

Name of the matrix for water chemistry	Below the matrices that can be used, alone or mixed, to comply with the representativity of the specified matrix				
	public drinking waters	bottled waters	reverse osmosis waters	deionised waters	surface waters
Natural mineral waters					
Non-atypical*		x flat (dry residue at 180°C<1500 mg/L)			
Atypical	carbo-gaseous		x gaseous (CO ₂ >250 mg/L)	x regasified (CO ₂ >250 mg/L)	
	highly mineralised		x plates (dry residue at 180°C<1500 mg/L)		
Fresh waters					
Non-atypical natural mineral waters*		x flat (dry residue at 180°C<1500 mg/L)			
Natural waters					x
Clean waters	x	x	x	x	x (clear)

For more information on atypical waters, check the following document: [ANSES/LHN/REF-CSE - Version 3](#) (in French)

* For some parameters in non-atypical natural mineral waters, specific programmes exist (3C, 92) with concentration levels different from those in fresh waters.

Name of the matrix for water chemistry	Below the matrices that can be used, alone or mixed, to comply with the representativity of the specified matrix		
	Waste waters from urban WWTP	Estuary water, costal water	Synthetic waters
Waste waters	x		x
Saline and brackish waters		x	x

WWTP: Waste Water Treatment Plant

Participate in AGLAE's External Quality Control



A WAY OF WORKING THAT PROVIDES YOU WITH THE HIGHEST STANDARD OF RESULTS WITH CONFIDENTIALITY AND IMPARTIALITY

Each step of the way, AGLAE is there supporting you.

REGISTRATIONS FOR PROFICIENCY TESTING ARE DONE KNOWING THE WHOLE PROCESS, WITH A DETAILED AND RIGOROUS SCHEDULE

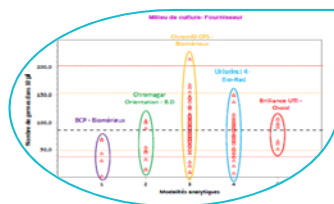


- ✓ The number of evaluations per year for each parameter is specified in the catalogue, concentration levels and stabilisation are available on request.
- ✓ AGLAE uses "express" shipments for your samples and makes sure of their distribution to your laboratory.
- ✓ A sufficient delay to analyse and the report the results.
- ✓ Via your member area, **enter your results and find instructions, assigned codes, reports, summaries of your results, certificate of participation...**

THE OPTIMISATION OF RISK MANAGEMENT FOR YOUR LABORATORY



- You have a better visibility of potential anomalies through:
- ✓ An appropriate test design (duplicate samples, repeated measurements),
 - ✓ A large number of participants: around 200 laboratories in the field of 'base' microbiology and 'base' physico-chemical analyses.



- AGLAE's detailed study:
- ✓ Influence of the analytical methods, manufacturers (equipment and consumables)... factors that we study to help you improve the quality of your analyses,
 - ✓ For waters intended for medical use and water microbiology, estimation of your own uncertainties in microbiology,
 - ✓ Check of your uncertainty estimates in chemistry (zeta-score),
 - ✓ A report validated by experts of the field and personalised for most tests.

ATTRACTIVE DISCOUNTS, PAYMENT CONDITIONS MADE EASIER

- Choose among the various programmes and benefit from discounts up to 15%,
- A possible payment in 2 or 3 folds depending on the amount your participation.
- Payment possible by cheque (in €), bank transfer, credit card on <https://www.helloasso.com/associations/a-g-l-a-e/paiements/aglae>

Amount of your invoice (excluding transport cost)	Discount
3000 ≤ Amount < 6000 € excl. VAT	5%
6000 ≤ Amount < 9000 € excl. VAT	10%
Amount ≥ 9000 € excl. VAT	15%

Additional services



ADDITIONAL TEST SAMPLES TO TEST ANOTHER METHOD, EVALUATE A TECHNICIAN

- ✓ Test samples available for almost all the tests at half price.
- ✓ Besides your usual distribution, you receive one (or several) additional parcel(s).
- ✓ The results of these samples are not statistically processed by AGLAE but for most tests you get a sheet **in your results file** where to **calculate your z-score**. Note that this sheet can also be used in case of unit error, incorrect results' report, etc.

⇒ Check the **list of samples and their price on your Member Area** (Downloads / Catalogues) and contact us to receive a quote. These additional samples need to be ordered after you registration for the test and before the shipment.



QUALITY CONTROL MATERIALS FOR YOUR MONITORING AND IMPROVEMENT OF YOUR ANALYTICAL PERFORMANCE

- ✓ Materials coming from the **solid matrices tests: sediments, sludge, polluted sites and soils**.
- ✓ Purchased at any time during the year and delivered with a certificate presenting the precision values obtained during the test (assigned value and uncertainties).

⇒ Check the **list of materials, prices and available quantities on your Member Area** (Downloads / Catalogues) and contact us to receive a quote.

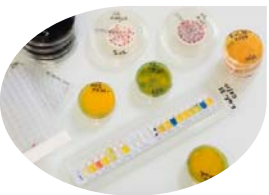


TRAINING SESSIONS IN MICROBIOLOGY: ONE TOPIC POSSIBLY PROVIDED IN ENGLISH

Two-day on-line session to become operational for:

- ✓ Characterising a microbiological method according to ISO 13843 in order to validate it

⇒ *Should you be interested in such a session, please get back to us.*



CUSTOMIZED SERVICE: 'PERFORMANCE CHARACTERISTICS OF MICROBIOLOGICAL METHODS'

Do you need to characterise specific methods?

AGLAE can provide you support to establish methods performance characteristics, in conformity with ISO 13843*. Benefit from AGLAE's technical and statistical experience to validate your microbiological method.

* *Water quality — Requirements for establishing performance characteristics of quantitative microbiological methods*

⇒ *Should you have such needs, contact us to study your request together and issue a quote.*



SUMMARY OF YOUR RESULTS FOR WATER MICROBIOLOGY AND WATER FOR MEDICAL USE TESTS

Gather at any time your results and performance: for a selected period, your results are grouped in an Excel file; this is a tool to support you in your Internal Quality Control, your audits...

Programmes' description

Content

For each programme's description, you will find the technical content of the test : volumes, parameters, matrices, dispatch month...

The concentration levels and stabilisation modalities of the samples are available on request.

The samples' dispatch months are given for information only.

Transport costs depend on the destination and tests selected within the programmes; contact us to get a quote.

Our aim is to prepare materials as close as possible to the samples analysed in routine: the contamination levels can therefore be very low or very high.

➔ **Our concentration levels are available on request.**

Caption



This logo shows that the programme is accredited by LABORATORIES section in compliance with ISO/IEC 17043.

PROGRAMME 3A: METALS IN FRESH WATERS

Test materials are suitable for the check of analyses in clear freshwaters, public drinking waters and non-atypical spring waters.



€ 563 excl. VAT - total amount for 3 tests (excluding transport costs)

135 participants in 2023 – EXPERIENCE: 30 YEARS



Need to test another method, evaluate your staff?

Order **additional test samples** (parcel in its entirety): € 95 excl. VAT (excluding transport costs)

Parameters to analyse <i>(implemented twice during the year and in 3 deliveries)</i>
24M3A.1 - Clean water - sent in January 2024
Al, Ba, Be, Cd, Co, Cr, Fe, Gd, Li, Mn, Mo, Ni, Pb, S, Sr, Ti, U, V, Zn
Ag
Hg
24M3A.2 - Clean water - sent in May 2024
Al, As, B, Be, Bi, Cd, Cu, Fe, Gd, Mo, Pb, S, Sb, Se, Sn, Te, Ti, Tl, W, Zr
Ce, Ga, La
Hg
24M3A.3 - Clean water - sent in November 2024
As, B, Ba, Bi, Co, Cr, Cu, Li, Mn, Ni, Sb, Se, Sn, Sr, Te, Tl, U, V, W, Zn, Zr
Ce, Ga, La
Ag

PARTICULARITIES

For all the parameters, the method used should enable to measure the total content of this element.



Other recommended proficiency tests:

- ↳ Programme 3G 'Additional metals in fresh waters'
- ↳ Programme 3C 'Metals in non-atypical natural mineral waters' – 'Health approval' (concentration levels appropriate for non-atypical mineral waters)

PROGRAMME 3G: ADDITIONAL METALS IN FRESH WATERS

Test materials are suitable for the check of analyses in clear freshwaters, public drinking waters and non-atypical spring waters.

€ 147 excl. VAT - total amount for 1 test (excluding transport costs)

New

New in 2024



Need to test another method, evaluate your staff?

Order **additional test samples** (parcel in its entirety): € 75 excl. VAT (excluding transport costs)

Parameters to analyse

24M3G.1 - Clean water - sent in August 2024

Cs, In, Pd, Pt, Rb

PARTICULARITIES

For all the parameters, the method used should enable to measure the total content of this element.

A minimum of 10 participants is required.



Other recommended proficiency tests:

- ↳ **Programme 3A** 'Metals in fresh waters'
- ↳ **Programme 3C** 'Metals in non-atypical natural mineral waters' – 'Health approval' (concentration levels appropriate for non-atypical mineral waters)

PROGRAMME 3D: HEXAVALENT CHROMIUM IN WATERS

Clean and natural waters: the materials are suitable for the check of analyses in fresh waters, public drinking waters, spring waters and non-atypical natural mineral waters.



€ 156 excl. VAT - total amount for 4 tests (excluding transport costs)

86 participants in 2023 - EXPERIENCE > 15 YEARS



Need to test another method, evaluate your staff?

Order **additional test samples** (parcel in its entirety): **€ 20 excl. VAT** (excluding transport costs)

Parameters to analyse
24M3D.1 - Waste water - sent in January 2024 - Refrigerated parcel
Cr ⁺⁶
24M3D.2 - Clean water - sent in April 2024 - Refrigerated parcel
Cr ⁺⁶
24M3D.3 - Waste water - sent in August 2024 - Refrigerated parcel
Cr ⁺⁶
24M3D.4 - Natural water - sent in November 2024 - Refrigerated parcel
Cr ⁺⁶

PROGRAMME 3B: METALS IN WASTE WATERS



€ 574 excl. VAT – total amount for 3 tests (excluding transport costs)

110 participants in 2023 - EXPERIENCE > 25 YEARS



Need to test another method, evaluate your staff?

Order **additional test samples** (parcel in its entirety): € 100 excl. VAT (excluding transport costs)

Parameters to analyse

(implemented twice during the year and in 3 deliveries)

24M3B.1 - Waste water - sent in March 2024

Al, As, B, Ba, Cd, Co, Cr, Fe, Li, Mn, Ni, Sn, Te, Ti, Tl, V, W, Zr

Ag, Hg

24M3B.2 - Waste water - sent in September 2024

As, B, Ba, Be, Bi, Co, Cu, Mn, Mo, Ni, Pb, S, Sb, Se, Sr, Te, U, V, W, Zn

24M3B.3 - Waste water - sent in December 2024

Al, Be, Bi, Cd, Cr, Cu, Fe, Li, Mo, Pb, S, Sb, Se, Sn, Sr, Ti, Tl, U, Zn, Zr

Ag, Hg

PARTICULARITIES

For all the parameters, the method used should enable to measure the total content of this element.

PROGRAMME 7: METALS IN SALINE WATERS



€ 147 excl. VAT - total amount for 1 test (excluding transport costs)

15 participants in 2023 - EXPERIENCE 25 YEARS



Need to test another method, evaluate your staff?

Order **additional test samples** (parcel in its entirety): **€ 75 excl. VAT** (excluding transport costs)

Parameters to analyse
24M7.1 - Saline and brackish water - sent in May 2024
As, Cd, Cr, Cu, Ni, Pb, Fe, Mn, Zn
Hg

PARTICULARITIES

For all the parameters, the method used should enable to measure the total content of the element.

PROGRAMME 3C: METALS IN NON-ATYPICAL NATURAL MINERAL WATERS

Non-atypical natural mineral waters: flat mineral water with dry residue content at 180°C < 1500 mg/L



€ 259 excl. VAT - total amount for 2 tests (excluding transport costs)

28 participants in 2023 - EXPERIENCE > 5 YEARS



Need to test another method, evaluate your staff?

Order **additional test samples** (parcel in its entirety): € 65 excl. VAT (excluding transport costs)

Parameters to analyse
24M3C.1 - Flat mineral water - sent in January 2024
Al, As, B, Ba, Be, Cd, Cr, Cu, Fe, Li, Mn, Ni, Pb, Sb, Se, Sr, U, Zn
Hg
24M3C.2 - Flat mineral water - sent in June 2024
Al, As, B, Ba, Be, Cd, Cr, Cu, Fe, Li, Mn, Ni, Pb, Sb, Se, Sr, U, Zn
Hg

PARTICULARITIES
<p>For all the parameters, the method used should enable to measure the total content of the element.</p> <p>‘Health approval’: this specific programme provides concentration levels appropriate for non-atypical mineral waters.</p>

PROGRAMME 3E: METALS IN SPARKLING WATERS

Carbogaseous waters: CO₂ >250 mg/L



€ 187 excl. VAT – total amount for 1 test (excluding transport costs)

21 participants in 2023 – EXPERIENCE > 5 YEARS



Need to test another method, evaluate your staff?

Order **additional test samples** (parcel in its entirety): **€ 95 excl. VAT** (excluding transport costs)

Parameters to analyse

24M3E.1 - Carbogaseous water - sent in February 2024

Al, As, B, Ba, Be, Cd, Cr, Cu, Fe, Li, Mn, Ni, Pb, Sb, Se, Sr, U, Zn

Hg

PARTICULARITIES

For all the parameters, the method used must enable to measure the total content of this element.

**PROGRAMME 3F:
METALS IN HIGHLY MINERALISED MINERAL WATERS**

Highly mineralised waters: flat mineral waters with dry residue content at 180°C > 1500 mg/L



€ 189 excl. VAT - total amount for 1 test (excluding transport costs)

11 participants in 2023 - EXPERIENCE: 4 YEARS



Need to test another method, evaluate your staff?

Order **additional test samples** (parcel in its entirety): **€ 95 excl. VAT** (excluding transport costs)

Parameters to analyse
24M3F.1 - Highly mineralised water - sent in July 2024
Al, As, B, Ba, Be, Cd, Cr, Cu, Fe, Li, Mn, Ni, Pb, Sb, Se, Sr, U, Zn
Hg

PARTICULARITIES
For all the parameters, the method used must enable to measure the total content of this element.