

AGLAE 2024

EXTRACT FROM THE PROFICIENCY TESTING SCHEME CATALOGUE

SOLID MATRICES



AGLAE Association

Parc des Pyramides
427 rue des Bourelliers
59320 Hallennes lez Haubourdin
France

☎ +33 (0)3 20 16 91 40

www.association-aglae.fr

contact@association-aglae.fr

Solid matrices: new tests, modification, list

New programmes in the catalogue

Solid matrices

- ✓ 47 Grain size distribution in solid matrices (*sediments and soils*)
- ✓ 51B Chemical analyses and metals in waste (leaching) - 'LAGA/DEPV' (conducted every two years)

Modifications of programmes

(introduced in programmes existing in 2023)

Waste

- ✓ 51: Cr⁺⁶ and Hg removed
- ✓ 9: grain size distribution removed but creation of a specific programme 47 with grain size analysis in sediment and soil

Specific points

Solid matrices (sediments, sludge, soil, waste)

LIMITED QUANTITY The quantity of materials is limited. Therefore, registrations are possible within the limits of available samples.

46: VOCs provided in **soil** in 2024

In general, if you have access to polluted solid matrices (particularly waste), please contact us at contact@association-aglae.fr

Due to technical constraints linked to the supply of contaminated waste:

- ✓ **51 Chemical analyses and metals in waste (leaching)**: design of the test modified with 1 measurement per parameter and per bottle.
- ✓ **51C PAHs in bituminous waste**: test conducted every two years as mentioned in the 2023 catalogue. It is not provided in 2024 but will be in 2025.

List of PTS in solid matrices

9	Chemical analyses and metals in sediments
10	Organic micropollutants in sediments*
40	Chemical analyses and metals in recoverable sewage sludges
41	Organic micropollutants in recoverable sewage sludges*
43	Chemical analyses and metals in contaminated sites and soils
44	Organic micropollutants in contaminated sites and soils*
46	Volatile Organic Compounds in solid matrices
47	Grain size distribution in solid matrices
51	Chemical analyses and metals in waste (leaching)
51A	Cyanides and phenol index in waste (leaching)
51B	Chemical analyses and metals in waste (leaching) - 'LAGA/ DepV'

Glossary of the matrices used

Name of the matrix for solid matrices	Below the matrices that can be used, alone or mixed, to comply with the representativity of the specified matrix					
	marine, river or port sediments	sludges from WWTP, industrial, sewage	soils or industrial contaminated sites	ashes	clinkers	residues from industries or human activity
Sediments	x					
Sludges		x				
Soils			x			
Wastes		x	x	x	x	x

Participate in AGLAE's External Quality Control



A WAY OF WORKING THAT PROVIDES YOU WITH THE HIGHEST STANDARD OF RESULTS WITH CONFIDENTIALITY AND IMPARTIALITY

Each step of the way, AGLAE is there supporting you.

REGISTRATIONS FOR PROFICIENCY TESTING ARE DONE KNOWING THE WHOLE PROCESS, WITH A DETAILED AND RIGOROUS SCHEDULE

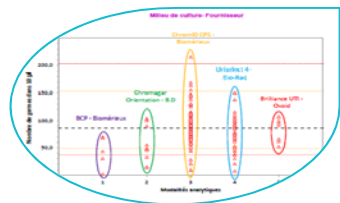


- ✓ The number of evaluations per year for each parameter is specified in the catalogue, concentration levels and stabilisation are available on request.
- ✓ AGLAE uses "express" shipments for your samples and makes sure of their distribution to your laboratory.
- ✓ A sufficient delay to analyse and the report the results.
- ✓ Via your member area, **enter your results and find instructions, assigned codes, reports, summaries of your results, certificate of participation...**

THE OPTIMISATION OF RISK MANAGEMENT FOR YOUR LABORATORY



- You have a better visibility of potential anomalies through:
- ✓ An appropriate test design (duplicate samples, repeated measurements),
 - ✓ A large number of participants: around 200 laboratories in the field of 'base' microbiology and 'base' physico-chemical analyses.



- AGLAE's detailed study:
- ✓ Influence of the analytical methods, manufacturers (equipment and consumables)... factors that we study to help you improve the quality of your analyses,
 - ✓ For waters intended for medical use and water microbiology, estimation of your own uncertainties in microbiology,
 - ✓ Check of your uncertainty estimates in chemistry (zeta-score),
 - ✓ A report validated by experts of the field and personalised for most tests.

ATTRACTIVE DISCOUNTS, PAYMENT CONDITIONS MADE EASIER

- Choose among the various programmes and benefit from discounts up to 15%,
- A possible payment in 2 or 3 folds depending on the amount your participation.
- Payment possible by cheque (in €), bank transfer, credit card on <https://www.helloasso.com/associations/a-g-l-a-e/paiements/aglae>

Amount of your invoice (excluding transport cost)	Discount
3000 ≤ Amount < 6000 € excl. VAT	5%
6000 ≤ Amount < 9000 € excl. VAT	10%
Amount ≥ 9000 € excl. VAT	15%

Additional services



ADDITIONAL TEST SAMPLES TO TEST ANOTHER METHOD, EVALUATE A TECHNICIAN

- ✓ Test samples available for almost all the tests at half price.
- ✓ Besides your usual distribution, you receive one (or several) additional parcel(s).
- ✓ The results of these samples are not statistically processed by AGLAE but for most tests you get a sheet **in your results file** where to **calculate your z-score**. Note that this sheet can also be used in case of unit error, incorrect results' report, etc.

⇒ Check the **list of samples and their price on your Member Area** (Downloads / Catalogues) and contact us to receive a quote. These additional samples need to be ordered after you registration for the test and before the shipment.



QUALITY CONTROL MATERIALS FOR YOUR MONITORING AND IMPROVEMENT OF YOUR ANALYTICAL PERFORMANCE

- ✓ Materials coming from the **solid matrices tests: sediments, sludge, polluted sites and soils**.
- ✓ Purchased at any time during the year and delivered with a certificate presenting the precision values obtained during the test (assigned value and uncertainties).

⇒ Check the **list of materials, prices and available quantities on your Member Area** (Downloads / Catalogues) and contact us to receive a quote.

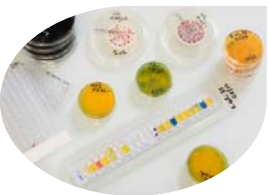


TRAINING SESSIONS IN MICROBIOLOGY: ONE TOPIC POSSIBLY PROVIDED IN ENGLISH

Two-day on-line session to become operational for:

- ✓ Characterising a microbiological method according to ISO 13843 in order to validate it

⇒ *Should you be interested in such a session, please get back to us.*



CUSTOMIZED SERVICE: 'PERFORMANCE CHARACTERISTICS OF MICROBIOLOGICAL METHODS'

Do you need to characterise specific methods?

AGLAE can provide you support to establish methods performance characteristics, in conformity with ISO 13843*. Benefit from AGLAE's technical and statistical experience to validate your microbiological method.

* *Water quality — Requirements for establishing performance characteristics of quantitative microbiological methods*

⇒ *Should you have such needs, contact us to study your request together and issue a quote.*



SUMMARY OF YOUR RESULTS FOR WATER MICROBIOLOGY AND WATER FOR MEDICAL USE TESTS

Gather at any time your results and performance: for a selected period, your results are grouped in an Excel file; this is a tool to support you in your Internal Quality Control, your audits...

Programmes' description

Content

For each programme's description, you will find the technical content of the test : parameters, matrices, dispatch month...

The concentration levels, volumes and stabilisation modalities of the samples are available on request.

The samples' dispatch months are given for information only.

Transport costs depend on the destination and tests selected within the programmes; contact

Our aim is to prepare materials as close as possible to the samples analysed in routine: the contamination levels can therefore be very low or very high.

➔ **Our concentration levels are available on request.**

Caption



This logo shows that the programme is accredited by LABORATORIES section in compliance with ISO/IEC 17043.

PROGRAMME 9: CHEMICAL ANALYSES AND METALS IN SEDIMENTS



€ 344 excl. VAT - total amount for 2 tests (excluding transport costs)

48 participants in 2023 - EXPERIENCE: 25 YEARS



Quality Control Materials coming from proficiency tests available
 € 20 excl. VAT per bottle (excluding transport costs)
 Materials are available once the test report is issued.

Parameters to analyse

24M9.1 - Sediment - sent in January 2024

total organic carbon (TOC), Ag, Al, As, B, Ba, Be, Ca, Cd, Co, Cr, Cu, Fe, Hg, K, Li, Mn, Mg, Mo, Na, Ni, Pb, pH, Sb, Se, Sn, Ti, Tl, Total Kjeldahl Nitrogen (TKN), Total-P, U, V, Zn, total-C, total-N, **dry matter, loss on ignition at 550°C**

24M9.2 - Sediment - sent in July 2024

total organic carbon (TOC), Ag, Al, As, B, Ba, Be, Ca, Cd, Co, Cr, Cu, Fe, Hg, K, Li, Mn, Mg, Mo, Na, Ni, Pb, pH, Sb, Se, Sn, Ti, Tl, Total Kjeldahl Nitrogen (TKN), Total-P, U, V, Zn, total-C, total-N, **dry matter, loss on ignition at 550°C**

PARTICULARITIES



The number of participants for the proficiency tests in solid matrices is limited. Registrations are possible within the limits of available samples. Register quickly.

Please note that laboratories that carry out total dissolution for Al, K and Ti may not be evaluated for lack of a sufficient number of results.



Other recommended proficiency test:

↳ **Programme 47** 'Grain size distribution in solid matrices'

PROGRAMME 10: ORGANIC MICROPOLLUTANTS IN SEDIMENTS



€ 537 excl. VAT - total amount for 2 tests (excluding transport costs)

32 participants in 2023 – EXPERIENCE: 25 YEARS



Quality Control Materials coming from proficiency tests available
 € 20 excl. VAT per bottle (excluding transport costs)
 Materials are available once the test report is issued.

Parameters to analyse

24M10.1 - Sediment - sent in March 2024

PCBs: PCB 28, PCB 52, PCB 101, PCB 118, PCB 138, PCB 153, PCB 180
Organochlorines: aldrin, dieldrin, heptachlor, heptachlorepoxyde (total), lindane
Organophosphorus: diazinon

PAHs: acenaphtene, acenaphtylene, anthracene, benzo[a]anthracene, benzo[a]pyrene, benzo[b]fluoranthene, benzo[g,h,i]perylene, benzo[k]fluoranthene, chrysene, dibenzo[a,h]anthracene, fluoranthene, fluorene, indeno[1,2,3 - cd]pyrene, 2-methylfluoranthene, 2-methylnaphtalene, naphtalene, phenanthrene, pyrene,
Total hydrocarbons index - C10-C40 range

Organotin compounds: monobutyltin cation, dibutyltin cation, tributyltin cation, tetrabutyltin, triphenyltin cation

24M10.2 - Sediment - sent in July 2024

PCBs: PCB 28, PCB 52, PCB 101, PCB 118, PCB 138, PCB 153, PCB 180
Organochlorines: aldrin, dieldrin, heptachlor, heptachlorepoxyde (total), lindane
Organophosphorus: diazinon

PAHs: acenaphtene, acenaphtylene, anthracene, benzo[a]anthracene, benzo[a]pyrene, benzo[b]fluoranthene, benzo[g,h,i]perylene, benzo[k]fluoranthene, chrysene, dibenzo[a,h]anthracene, fluoranthene, fluorene, indeno[1,2,3 - cd]pyrene, 2-methylfluoranthene, 2-methylnaphtalene, naphtalene, phenanthrene, pyrene,
Total hydrocarbons index - C10-C40 range

Organotin compounds: monobutyltin cation, dibutyltin cation, tributyltin cation, tetrabutyltin, triphenyltin cation

PARTICULARITIES



The number of participants for the proficiency tests in solid matrices is limited. Registrations are possible within the limits of available samples. Register quickly.

Total hydrocarbons index - C10-C40 range: sum of the concentrations of compounds extractable with a hydrocarbon solvent, boiling point between 36 °C and 69 °C, not adsorbed on Florisil and which may be chromatographed by GC-FID, with retention times between those of n-decane (C10H22) and n-tetracontane (C40H82).



Other recommended proficiency test:

↳ **Programme 46** 'Volatile Organic Compounds in solid matrices'

PROGRAMME 40: CHEMICAL ANALYSES AND METALS IN RECOVERABLE SEWAGE SLUDGES



€ 497 excl. VAT - total amount for 2 tests (excluding transport costs)

46 participants in 2023 - EXPERIENCE > 25 YEARS



Quality Control Materials coming from proficiency tests available for pretreated materials only.

€ 20 excl. VAT per bottle (excluding transport costs).
Materials are available once the test report is issued.

Parameters to analyse

(some parameters are not provided in raw sludge)

24M40.1 - Pretreated sludge - sent in April 2024

total organic carbon (TOC), Ag, Al, As, B, Ba, Ca, Cd, Co, Cr, Cu, Fe, Hg, K, Mg, Mn, Mo, Na, Ni, Pb, Sb, Se, Sn, Sum (Cr + Cu + Ni + Zn), Total Kjeldahl Nitrogen (TKN), total-C, total-N, Total-P, Total-S, Ti, V, Zn, dry matter, loss on ignition at 550°C, pH

24M40.2 - Raw sludge - sent in October 2024

total organic carbon (TOC), Al, As, B, Ba, Ca, Cd, Co, Cr, Cu, Fe, Hg, K, Mg, Mn, Mo, Na, Ni, Pb, Sb, Se, Sn, Sum (Cr + Cu + Ni + Zn), Total Kjeldahl Nitrogen (TKN), total-C, total-N, Total-P, Total-S, Zn, dry matter, loss on ignition at 550°C, pH

PARTICULARITIES

LIMITED QUANTITY

The number of participants for the proficiency tests in solid matrices is limited. Registrations are possible within the limits of available samples. Register quickly.

A.G.L.A.E. provides proficiency tests on the one hand on **raw materials** (to include the part of measurement uncertainty due to the pretreatment phase like in your routine analyses) and on the other hand on **pretreated materials** (to guarantee the presence of all the parameters to analyse and carry out enhanced monitoring on the analytical part of the analysis, predominant source of uncertainty).

- ✓ **Pretreated material:** material dried, crushed and sieved.
- ✓ **Raw material:** material dried, lightly crushed but not sieved. If we are not able to guarantee the presence of all the parameters listed, an evaluation of your results will still be carried out (check of false positives).

PROGRAMME 41: ORGANIC MICROPOLLUTANTS IN RECOVERABLE SEWAGE SLUDGES



€ 560 excl. VAT - total amount for 2 tests (excluding transport costs)

23 participants in 2023 - EXPERIENCE > 25 YEARS



Quality Control Materials coming from proficiency tests available for pretreated materials only.

€ 20 excl. VAT per bottle (excluding transport costs).
Materials are available once the test report is issued.

Parameters to analyse

24M41.1 - Pretreated sludge - sent in April 2024

Dry matter

PAHs: acenaphtene, acenaphtylene, anthracene, benzo[a]anthracene, benzo[a]pyrene, benzo[b]fluoranthene, benzo[g,h,i]perylene, benzo[k]fluoranthene, chrysene, dibenzo[a,h]anthracene, fluoranthene, fluorene, indeno[1,2,3 - cd]pyrene, naphtalene, phenanthrene, pyrene

PCBs: PCB 28, PCB 52, PCB 101, PCB 118, PCB 138, PCB 153, PCB 180, Sum of PCBs 28, 52, 101, 118, 138, 153, 180

24M41.2 - Raw sludge - sent in October 2024

Dry matter

PAHs: acenaphtene, acenaphtylene, anthracene, benzo[a]anthracene, benzo[a]pyrene, benzo[b]fluoranthene, benzo[g,h,i]perylene, benzo[k]fluoranthene, chrysene, dibenzo[a,h]anthracene, fluoranthene, fluorene, indeno[1,2,3 - cd]pyrene, naphtalene, phenanthrene, pyrene

PCBs: PCB 28, PCB 52, PCB 101, PCB 118, PCB 138, PCB 153, PCB 180, Sum of PCBs 28, 52, 101, 118, 138, 153, 180

PARTICULARITIES

LIMITED QUANTITY

The number of participants for the proficiency tests in solid matrices is limited. Registrations are possible within the limits of available samples. Register quickly.

A.G.L.A.E. provides proficiency tests on the one hand on raw materials (to include the part of measurement uncertainty due to the pretreatment phase like in your routine analyses) and on the other hand on pretreated materials (to guarantee the presence of all the parameters to analyse and carry out enhanced monitoring on the analytical part of the analysis, predominant source of uncertainty):

- ✓ **Pretreated material:** material dried, crushed and sieved,
- ✓ **Raw material:** material dried, lightly crushed but not sieved. If we are not able to guarantee the presence of all the parameters listed, an evaluation of your results will still be carried out (check of false positives).

PROGRAMME 43: CHEMICAL ANALYSES AND METALS IN CONTAMINATED SITES AND SOILS



€ 297 excl. VAT - total amount for 2 tests (excluding transport costs)

28 participants in 2023 - EXPERIENCE > 10 YEARS



Quality Control Materials coming from proficiency tests available for pretreated materials only.

€ 20 excl. VAT per bottle (excluding transport costs).
Materials are available once the test report is issued.

Parameters to analyse

(some parameters are not provided in raw soil)

24M43.1 - Pretreated soil - sent in June 2024

Total organic carbon (TOC), dry matter, Al, As, Ba, Ca, Cd, Co, Cr, Cu,
Fe, Hg, K, Mg, Mn, Mo, Na, Ni, Pb, Total-P, Sb, Se, Sn, Zn

24M43.2 - Raw soil - sent in November 2024

Total organic carbon (TOC), dry matter, Al, As, Ca, Cd, Co, Cr, Cu,
Fe, Hg, K, Mg, Mn, Na, Ni, Pb, Total-P, Se, Zn

PARTICULARITIES

LIMITED QUANTITY

The number of participants for the proficiency tests in solid matrices is limited. Registrations are possible within the limits of available samples. Register quickly.

Please note that laboratories that carry out total dissolution for Al, K and Ti may not be evaluated for lack of a sufficient number of results.

A.G.L.A.E. provides proficiency tests on the one hand on **raw materials** (to include the part of measurement uncertainty due to the pretreatment phase like in your routine analyses) and on the other hand on **pretreated materials** (to guarantee the presence of all the parameters to analyse and carry out enhanced monitoring on the analytical part of the analysis, predominant source of uncertainty).

- ✓ **Pretreated material:** material dried, crushed and sieved.
- ✓ **Raw material:** material dried, lightly crushed but not sieved. If we are not able to guarantee the presence of all the parameters listed, an evaluation of your results will still be carried out (check of false positives).



Other recommended proficiency test:

↪ **Programme 47** 'Grain size distribution in solid matrices

PROGRAMME 44: ORGANIC MICROPOLLUTANTS IN CONTAMINATED SITES AND SOILS



€ 446 excl. VAT - total amount for 2 tests (excluding transport costs)

28 participants in 2023 - EXPERIENCE > 10 YEARS



Quality Control Materials coming from proficiency tests available for pretreated materials only.

€ 20 excl. VAT per bottle (excluding transport costs).
Materials are available once the test report is issued.

Parameters to analyse

24M44.1 - Pretreated soil - sent in June 2024

PAHs: acenaphtene, acenaphtylene, anthracene, benzo[a]anthracene, benzo[a]pyrene, benzo[b]fluoranthene, benzo[g,h,i]perylene, benzo[k]fluoranthene, chrysene, dibenzo[a,h]anthracene, fluoranthene, fluorene, indeno[1,2,3 - cd]pyrene, naphtalene, phenanthrene, pyrene

Total hydrocarbons index - C10-C40 range

PCBs: PCB 28, PCB 52, PCB 101, PCB 118, PCB 138, PCB 153, PCB 180

24M44.2 - Raw soil - sent in November 2024

PAHs: acenaphtene, acenaphtylene, anthracene, benzo[a]anthracene, benzo[a]pyrene, benzo[b]fluoranthene, benzo[g,h,i]perylene, benzo[k]fluoranthene, chrysene, dibenzo[a,h]anthracene, fluoranthene, fluorene, indeno[1,2,3 - cd]pyrene, naphtalene, phenanthrene, pyrene

Total hydrocarbons index - C10-C40 range

PCBs: PCB 28, PCB 52, PCB 101, PCB 118, PCB 138, PCB 153, PCB 180

PARTICULARITIES



The number of participants for the proficiency tests in solid matrices is limited. Registrations are possible within the limits of available samples. Register quickly.

Total hydrocarbons index - C10-C40 range: sum of the concentrations of compounds extractable with a hydrocarbon solvent, boiling point between 36 °C and 69 °C, not adsorbed on Florisil and which may be chromatographed by GC-FID, with retention times between those of n-decane (C₁₀H₂₂) and n-tetracontane (C₄₀H₈₂).

A.G.L.A.E. provides proficiency tests on the one hand on **raw materials** (to include the part of measurement uncertainty due to the pretreatment phase like in your routine analyses) and on the other hand on **pretreated materials** (to guarantee the presence of all the parameters to analyse and carry out enhanced monitoring on the analytical part of the analysis, predominant source of uncertainty).

- ✓ **Pretreated material:** material dried, crushed and sieved.
- ✓ **Raw material:** material dried, lightly crushed but not sieved. If we are not able to guarantee the presence of all the parameters listed, an evaluation of your results will still be carried out (check of false positives).



Other recommended proficiency test:

👉 **Programme 46** 'Volatile Organic Compounds in solid matrices'

PROGRAMME 46: VOLATILE ORGANIC COMPOUNDS IN SOLID MATRICES



€ 263 excl. VAT - total amount for 1 test (excluding transport costs)

19 participants in 2023 - EXPERIENCE: 1 YEAR

Parameters to analyse

24M46.1 – Pretreated soil - sent in March 2024 - Refrigerated parcel

Dry matter
Benzene^[1], toluene^[1], ethylbenzene^[1], xylene ortho^[1],
Xylene para + xylene meta^[1], total xylenes^[1]

^[1] parameter not covered by accreditation (see general conditions of registration)

PARTICULARITIES

LIMITED QUANTITY

The number of participants for the proficiency tests in solid matrices is limited. Registrations are possible within the limits of available samples. Register quickly.



Other recommended proficiency tests:

- ↪ Programme 10 'Organic micropollutants in sediments'
- ↪ Programme 44 'Organic micropollutants in polluted sites and soils'

PROGRAMME 47: GRAIN SIZE DISTRIBUTION IN SOLID MATRICES



€ 208 excl. VAT - total amount for 2 tests (excluding transport costs)

19 participants in 2023 - EXPERIENCE 20 YEARS

New in 2024 in soil



Quality Control Materials coming from proficiency tests available
€ 20 excl. VAT per bottle (excluding transport costs)
 Materials are available once the test report is issued.

Parameters to analyse
24M47.1 - Sediment - sent in January 2024
Grain size distribution ^[1] , dry matter
24M47.2 - Soil - sent in July 2024
Grain size distribution ^[1] , dry matter
^[1] parameter not covered by accreditation (see general conditions of registration)

PARTICULARITIES

LIMITED QUANTITY

The number of participants for the proficiency tests in solid matrices is limited. Registrations are possible within the limits of available samples. Register quickly.

PROGRAMME 51: CHEMICAL ANALYSES AND METALS IN WASTE (LEACHING)

Wastes can be polluted soils, ashes, clinkers, residues from industrial activity, sludges from wastewater treatment plants.



€ 616 excl. VAT - total amount for 2 tests (excluding transport costs)

49 participants in 2023 - EXPERIENCE > 20 YEARS

Parameters to analyse

*(implemented in **at least one** proficiency test)*

24M51.1 - Waste - sent in May 2024

conductivity, dry matter, dry residue at 105°C of the eluate, pH, soluble fraction, total organic carbon (TOC), unburned rate at 500°C, As, Cd, Cr, Cu, Ni, Pb, Zn, Cl⁻, F⁻, SO₄²⁻

24M51.2 - Waste - sent in October 2024

conductivity, dry matter, dry residue at 105°C of the eluate, pH, soluble fraction, total organic carbon (TOC), unburned rate at 500°C, As, Ba, Cd, Cr, Cu, Mo, Ni, Pb, Sb, Se, Zn, Cl⁻, F⁻, SO₄²⁻

PARTICULARITIES

Technical constraints linked to the supply of contaminated waste have forced us to modify the test design and the parameters provided (Cr⁺⁶ and Hg have been removed). If you have access to contaminated waste, please contact us at contact@association-aglae.fr.

LIMITED QUANTITY

The number of participants for the proficiency tests in solid matrices is limited. Registrations are possible within the limits of available samples.
Register quickly.

Leaching of the provided waste to be carried out with a ratio L/S=10 (L/kg) and contact duration of 24h.

PROGRAMME 51A: CYANIDES AND PHENOL INDEX IN WASTE (LEACHING)



This programme meets in particular the requirements of the German regulation dealing with waste intended for landfill or recycling ('LAGA/DepV': 'Länder-Arbeitsgemeinschaft Abfall / Deponieverordnung').



€ 605 excl. VAT - total amount for 1 test (excluding transport costs)

20 participants in 2023 - EXPERIENCE > 5 YEARS

Parameters to analyse

24M51A.1 - Waste - sent in September 2024

Easily liberatable cyanide, total cyanide, dry matter

Phenol index^[1], dry matter

^[1] parameter not covered by accreditation (see general conditions of registration)

PARTICULARITIES

LIMITED QUANTITY

The number of participants for the proficiency tests in solid matrices is limited. Registrations are possible within the limits of available samples. Register quickly.

The unit to report the results is expressed per liter of eluate.
Leaching of the waste to be carried out with a ratio L/S=10 (L/kg) and contact duration of 24h.

PROGRAMME 51B: CHEMICAL ANALYSES AND METALS IN WASTE (LEACHING) - 'LAGA/DEPV'



Programme specific to the German regulation dealing with waste intended for landfill or recycling ('LAGA/DepV': 'Länder-Arbeitsgemeinschaft Abfall / Deponieverordnung')



€ 408 excl. VAT - total amount for 1 test (excluding transport costs)

36 participants in 2022 – EXPERIENCE 3 YEARS

Parameters to analyse

24M51B.1 - Waste - sent in September 2024

Dry matter, As, Ba, Cd, Cl⁻, Cr, Cu, F⁻, Hg, Mo, Ni, Pb, Sb, Se, SO₄²⁻, Zn, conductivity, pH, dissolved organic carbon

PARTICULARITIES

LIMITED QUANTITY

The number of participants for the proficiency tests in solid matrices is limited. Registrations are possible within the limits of available samples. Register quickly.

Biannual periodicity: this programme is provided one year out of two. It will be provided again in 2026.

The unit to report the results is expressed per liter of eluate.

Leaching of the waste to be carried out with a ratio L/S=10 (L/kg) and contact duration of 24h.